



CAPITAL ANALYSIS OF FISHERMEN'S INCOME IN KUTAI KARTANEGARA DISTRICT THROUGH LABORS

Tutik Yuliani¹ ; Misna Ariani² ; Didik Hadiyatno³

Program Study Management
Faculty of Economic and Business
Balikpapan University

ABSTRACT

Income is an indicator that can be used to measure the level of community welfare in an area. This research aims to determine and analyze capital versus income through labor in Kutai Kartanegara Regency. This research is quantitative research. The data collection method is by distributing questionnaires. The population used in this research were 93 fishermen in Kutai Kartanegara Regency. The data collection technique uses a questionnaire. Data processing uses SmartPLS software. The research results show that (1) capital has a direct influence on labor and income, (2) capital influences the income of fishermen in Kutai Kartanegara Regency through labor.

Keyword : Capital, labor, income

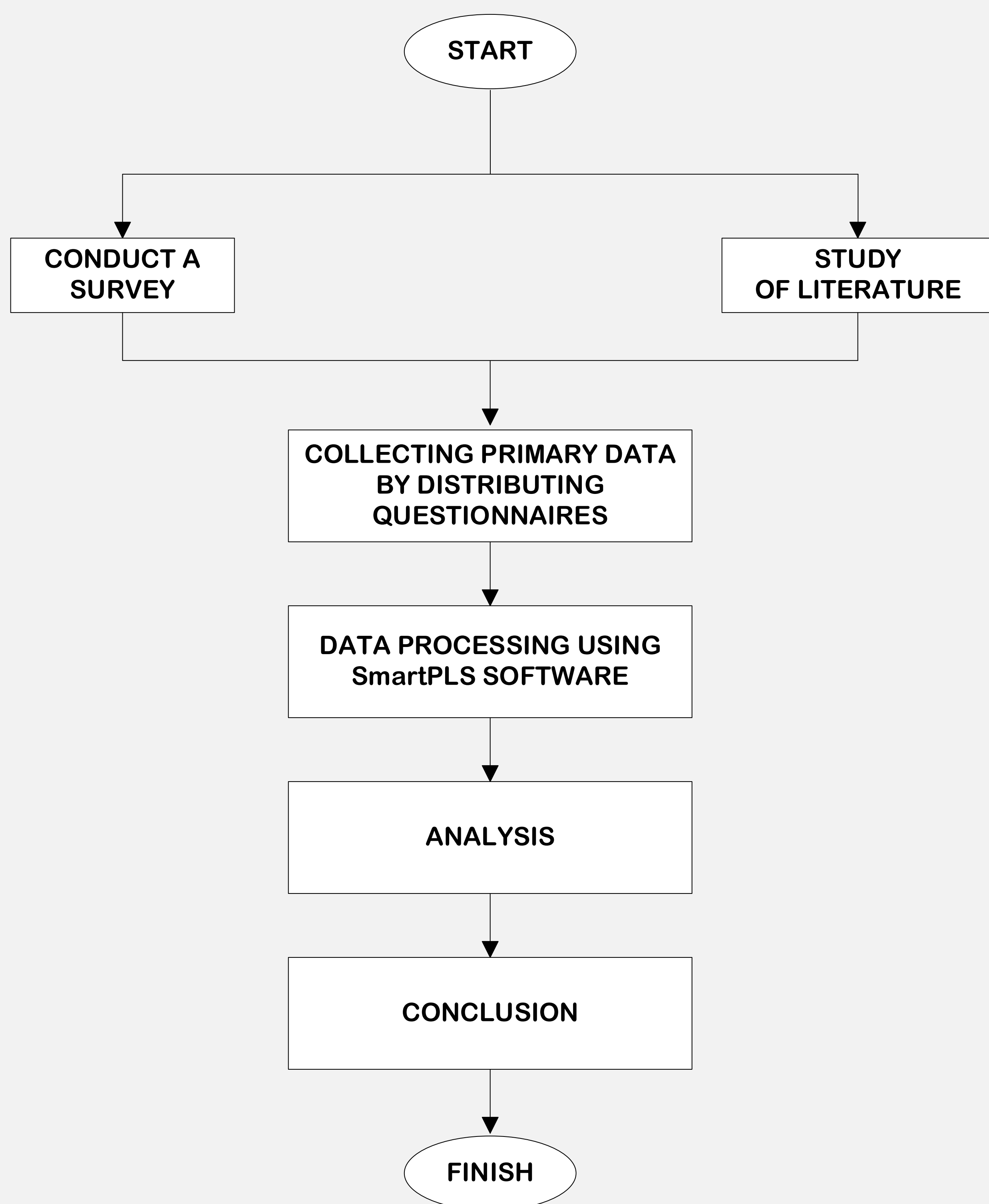
INTRODUCTION AND OBJECTIVE

Marine resources are abundant and, if managed optimally, can encourage and create opportunities to increase economic activity in an area. The economy of a region can be measured by the level of prosperity of its people, one of the indicators of which is income. Income is the amount of income earned by a person for the work he or she has completed during a certain period, whether daily, weekly, monthly or annually (Sadono, 2010).

Much of the income of fishermen in Kutai Kartanegara district can be influenced by low capital and the modernization of the technology used. Capital is an amount of money or goods used by humans in carrying out their work with the aim of making a profit or increasing income (Surdaryono, 2017). Capital and income have a close relationship, namely the greater the business capital used, the greater the income that will be obtained and vice versa.

Apart from capital, labor can also influence fishermen's income, that is, the more workers who have skills, the more output they will be able to produce so that a person's income will also increase or increase. In this study, we want to find out whether capital and labor can directly and indirectly influence the income of fishermen in Kutai Kartanegara Regency.

METHODS



RESULT

Table the influence of direct and indirect effects of capital on labor and income

	ORIGINAL SAMPLE	T STATISTIC	P VALUES
CAPITAL → INCOME	0.177	2.453	0.015
CAPITAL → LABORS	0.356	3.031	0.003
CAPITAL → LABORS → INCOME	0.817	4.436	0.000

CONCLUSION

The research results show that capital has a direct influence on labor and income of fishermen in Kutai Kartanegara district and indirectly capital influences income through labor.

CONTACT US

tutik.yuliani@uniba-bpn.ac.id
misna.ariani@uniba-bpn.ac.id
didik.hadiyatno@uniba-bpn.ac.id

Program Study Management, Faculty of Economics and Business
Balikpapan University, Balikpapan, East Kalimantan, 76114, Indonesia